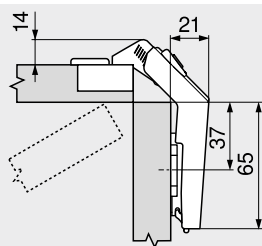


Corner cabinet bi-fold hinge

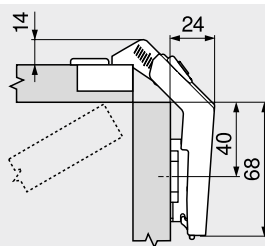
Web code
DQDQJY

Planning

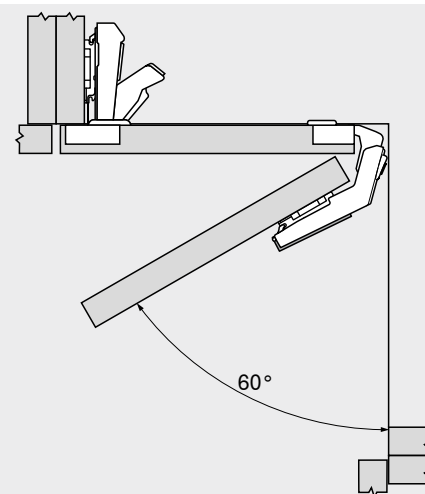
Hinge dimensions and gap calculation based on factory setting



Application type for front thickness FD 19 mm in conjunction with 0 mm spaced standard mounting plate

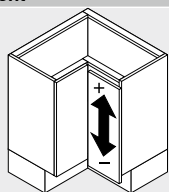


Application type for front thickness FD 19 mm in conjunction with 3 mm spaced standard mounting plate
For front thicknesses FD from 15–19 mm, factory setting for 19 mm front thickness FD

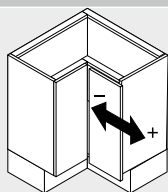


The hinge boss of the bi-fold hinge should be fixed to the same front as the hinge boss of the 170° and 155° hinge

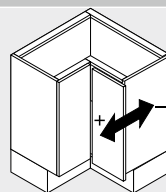
Adjustment



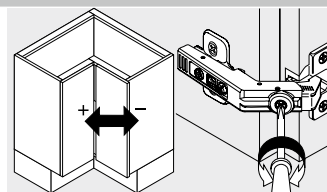
Height adjustment
Max. ± 3.0 mm
See mounting plates



Side adjustment
 $+3.0$ mm
 -2.0 mm

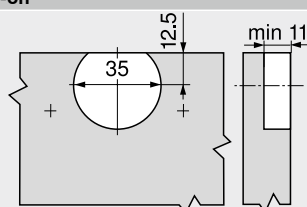


Depth adjustment
 ± 2.0 mm

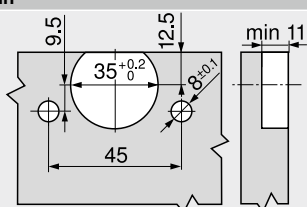


Gap adjustment
 $+7.2$ mm
 -4.2 mm

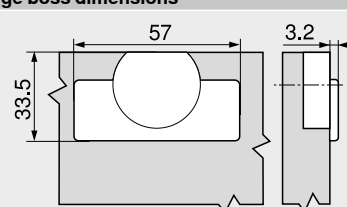
Screw-on



Knock-in



Hinge boss dimensions



Reference pages

Overview – CLIP top BLUMOTION CLIP top – hinges	71
Mounting plates	144
Accessories – hinge arm cover cap	151
Accessories – general	153
Overview – BLUMOTION for doors	157
Overview – assembly devices	591
More technical details	698

Assembly, removal and adjustment

Short URL
www.blum.com/a210

