

Fixing system for thin fronts – EXPANDO T

Planning

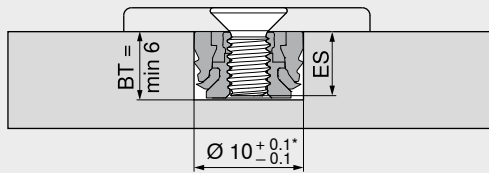
Area of application – EXPANDO T

EXPANDO T is suitable for fixing Blum fittings to thin front materials in furniture manufacturing
 With sufficient stability and strength, front materials of 8 mm thickness and above may be used

Area of application and assembly recommendation

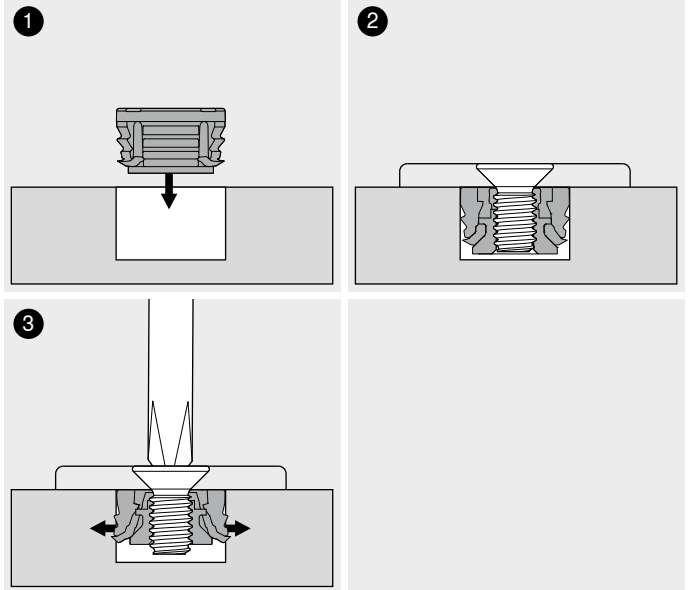
Materials tested by Blum	Transverse tensile strength (N/mm ²)	Min. tightening torque (Nm)
Chipboard	> 0.40	1.5
MDF	> 0.60	1.5
HDF		2
HPL		2
Mineral composites		2
Nero Assoluto natural granite stone		3
Quartz composite artificial stone		3
Ceramic plates		3

Drilling depth | screw selection – EXPANDO T



Screws with M4 thread have to be used for EXPANDO T single
 The lowest possible drilling depth should be selected for the single dowel, depending on the screw length
 BT Drilling depth
 ES Screw penetration depth
 ES min. = 4 mm
 ES max. = BT – 0.5 mm
 * Stone and ceramic +0.2/-0.1 mm

Assembly – EXPANDO T



Limitation of liability

Blum accepts no liability for the use of EXPANDO T in combination with materials not listed or fittings from other manufacturers
 It is recommended that the assembly be carried out by an experienced furniture manufacturer

Reference pages

AVENTOS HS – up and over lift system	30
AVENTOS HL – lift up	36
Overview	43
CLIP top BLUMOTION CLIP top – hinges	70
LEGRABOX	190
Overview	257
Front/base stabiliser for thin fronts	239

More on our new EXPANDO T fixing system

Short URL
www.blum.com/EXPANDO_T_3



Assembly, removal and adjustment

Short URL
www.blum.com/a720

